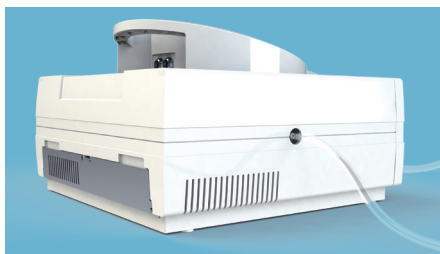
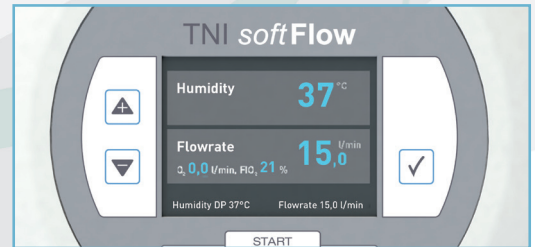


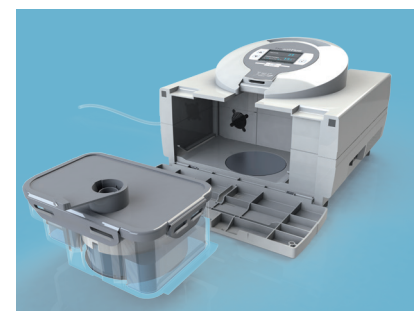
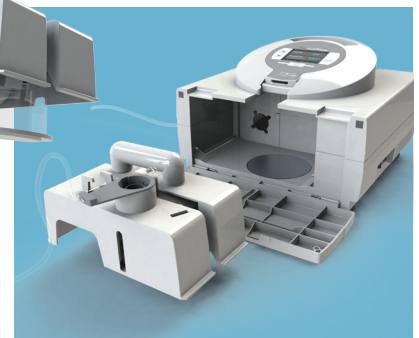
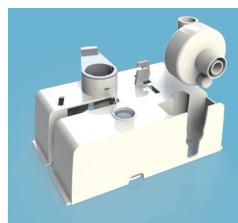
# TNI softFlow<sup>®</sup> junior

for Prematures, Neonatals and Infants

- ✓ Flowrate 2 to 15 l/min
- ✓ Humidity, dew point from 30° to 37° DP
- ✓ 0-12 l/min admixture of oxygen
- ✓ FiO<sub>2</sub> indicator integrated in the display
- ✓ Flexible use in clinical settings with maximum hygienic safety



- ✓ Easiest handling in home care settings





# TNI softFlow<sup>®</sup> junior

## PERFORMANCE DATA:

Flowrate 2 to 15l/min

Adjustable in 0.5l/min steps

Tolerances:

Tolerance in the flowrate range of 2 - 10 l/min is +/- 0.1 l/min

Tolerance in the flowrate range of 10 - 15 l/min is +/- 2 %

0-12l/min admixture of oxygen possible  
l/min indicator in the display

FiO<sub>2</sub> indicator integrated in the display

Humidity, dew point from 30° - 37° DP,  
adjustable in 1°DP steps

Condensate-free gas-air flow management  
for pleasant therapy

Event memory / SD-Card / 4 EU languages

Flexible use in clinical settings with  
maximum hygienic safety

Easiest handling in home care settings

Individual variety of applicators

Automatic identification of applicator type

Professional use in clinical settings

Humidification chamber auto fill included

MRP filter

Professional use in home care settings

600 ml water chamber


For use with drinking water or demineralised water

Humidification chamber auto fill (optional)

## DEVICE PARAMETERS

Operating voltage	100-240 V AC 50-60 Hz
Maximum power system	300 VA
Maximum power heating plate	150 VA
Maximum power applicator heating	48 VA
Max. temp. of flowrate	< 43°C
Device dimensions	B 315mm H 140mm T 320mm
Weight	5,6 kg

## TECHNICAL DATA:

Medical product class (93/42/EWG)	Ila
Safety class, electrically	II
Safety level "applied part"	BF
Safety type	IP21
Electrical safety	according to EN 60601-1 UL 60601-1 CSA C22.2/No 60601-1
Electromagnetic compatibility	according to EN 60601-1-2
CE marking	 0297



Only an **exact**, regulated **flowrate** (in l/min) consisting of air or **air-O<sub>2</sub> mixture**, ensures a **high quality** therapy **without side-effects** for **clinical** and **home care** settings, **guarantees** a stable **FiO<sub>2</sub>** and **confirms** our **study results**.

